



# HARBOR VILLAGE

HARBOR SHORES

MARINA DISTRICT ALONG THE SAINT JOSEPH RIVER

BIMINI  
3 BDRM / 3 BATH





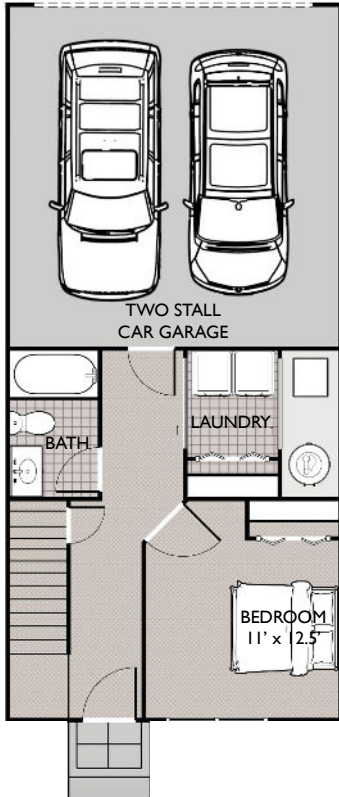
# HARBOR VILLAGE

HARBOR SHORES

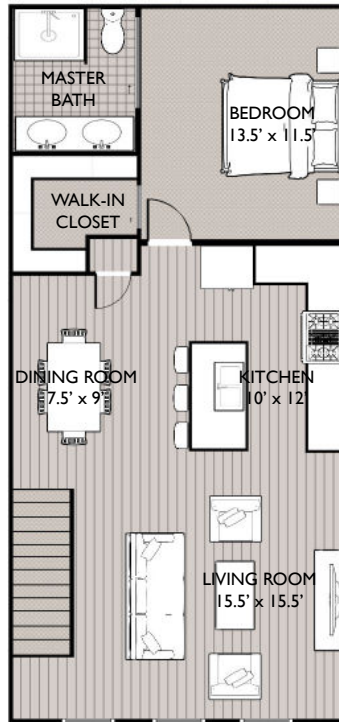
MARINA DISTRICT ALONG THE SAINT JOSEPH RIVER

## BIMINI

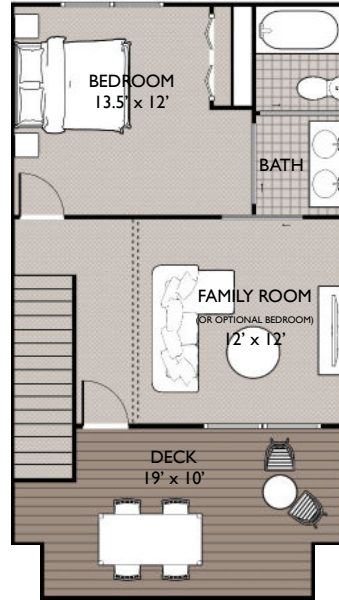
3 BDRM / 3 BATH



FIRST FLOOR PLAN  
- 430 SF



SECOND FLOOR PLAN  
- 840 SF



THIRD FLOOR PLAN  
- 515 SF

Located in Harbor Village, the Bimini offers 1785 square feet of spacious living area. The Bimini features 3 bedrooms, optional 4th, 3 bathrooms and an attached 2 car garage. Additional outdoor living space includes a third level covered porch with beautiful views.

