



HARBOR VILLAGE

HARBOR SHORES

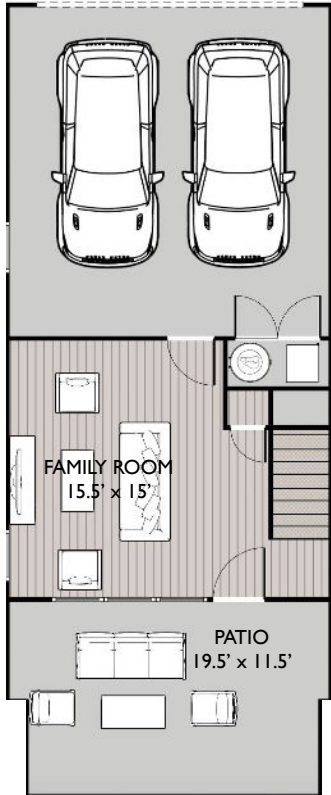
MARINA DISTRICT ALONG THE SAINT JOSEPH RIVER

ADMIRAL
3 BDRM / 2.5 BATH

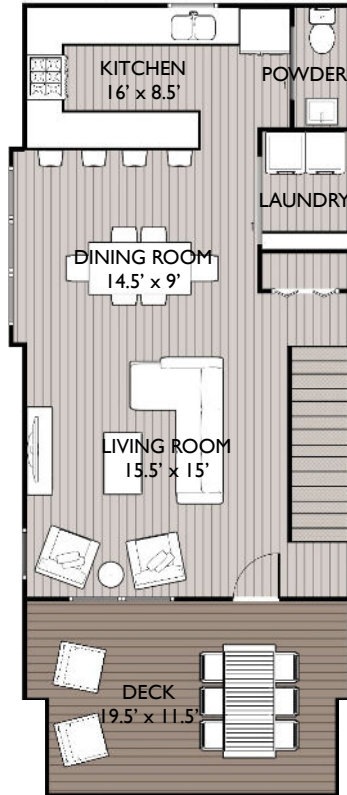




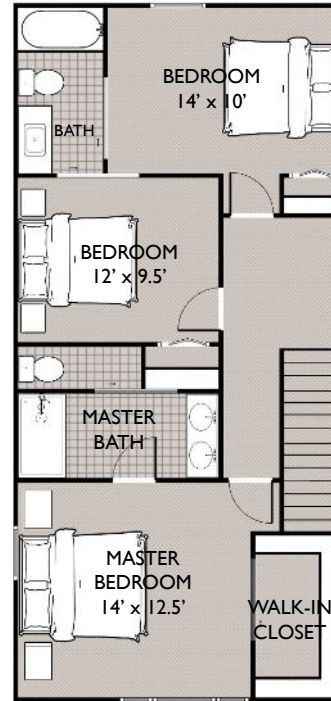
ADMIRAL
3 BDRM / 2.5 BATH



FIRST FLOOR PLAN
- 320 SF



SECOND FLOOR PLAN
- 730 SF



THIRD FLOOR PLAN
- 850 SF

Located in Harbor Village, the Admiral offers 1900 square feet of spacious living area. The Admiral features 3 bedrooms (optional 4th), 2.5 bathrooms and an attached 2 car garage. Two outdoor living spaces include a first level covered front porch and a second level covered porch with beautiful views.

